



# War vs Ukraine, war against environment

Miroslav Havránek

CENIA, Czech environmental information agency






 ugurgallen




There is no  
such thing as  
environmentally  
friendly war



An aerial photograph of Hiroshima, Japan, taken shortly after the atomic bombing on August 9, 1945. The city is in a state of total devastation. The once-dense urban area is now a vast, dark expanse of rubble and charred remains. A few skeletal remains of buildings are visible, particularly in the lower right quadrant. The A-Bomb Dome, the only remaining structure from the pre-war city, stands as a lone, partially destroyed building in the center-right. The surrounding landscape is also scorched, with a river visible in the lower left. The sky is overcast and grey. A large, dark, jagged silhouette, resembling a bird or a wing, is superimposed on the right side of the image, partially obscuring the city's ruins.

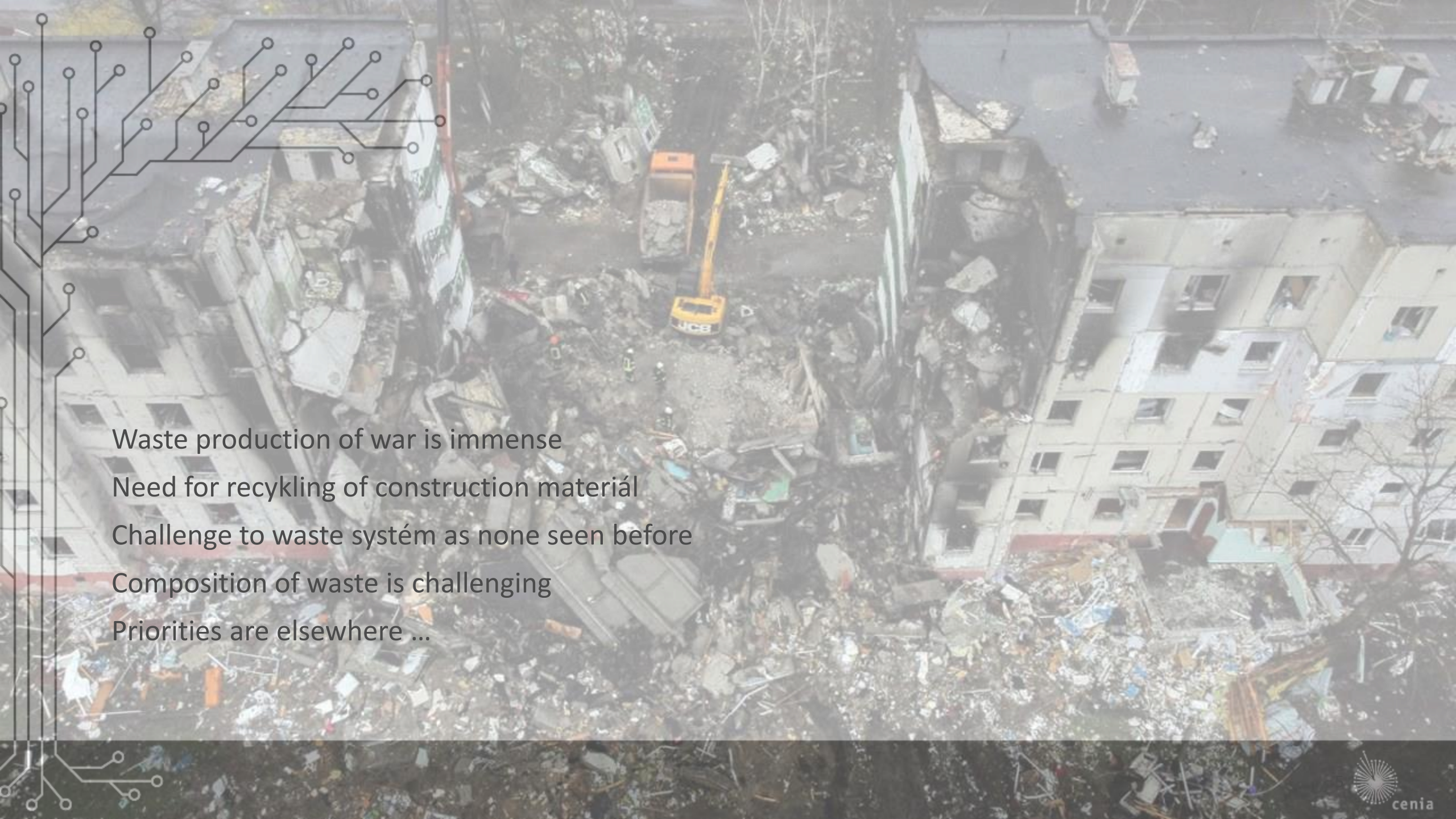
Energy flows in size of  
Hiroshima-size nuclear  
bomb twice a month



An aerial photograph of a city, likely in Ukraine, showing significant damage. In the foreground, there is a large pile of rubble and debris, with a small fire burning. To the left, a tall, dark building stands. To the right, a multi-story apartment building is visible, with some windows appearing broken. In the background, more residential buildings and a church with a tall spire are visible under a hazy sky.

Type	Count
Family houses	126 700
Flat houses	17 100
Agricultural machinery	84 200
Cars	194 800
Schools	2 918
Medical facilities	1 131
Cultural and sport facilities	1 171



An aerial photograph showing the aftermath of a disaster, likely an earthquake. The image captures a large area of rubble and debris between two multi-story buildings. A yellow excavator is visible in the center, working amidst the wreckage. The ground is covered in a thick layer of broken concrete, twisted metal, and other debris. The buildings on either side appear damaged, with some windows missing and structural elements exposed. The overall scene conveys the scale of destruction and the challenges of dealing with the resulting waste.

Waste production of war is immense  
Need for recycling of construction material  
Challenge to waste system as none seen before  
Composition of waste is challenging  
Priorities are elsewhere ...









## Pressure to climate

**1 km of road = 65,78 tun CO<sub>2</sub> eq.**

**1 car = 7-35 tun CO<sub>2</sub> eq.**

**1 m<sup>2</sup> of building = 0,2 – 0,3 tun CO<sub>2</sub> eq.**

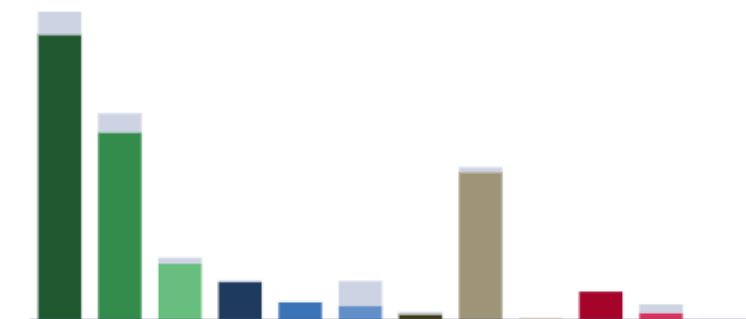
## So far

**400 - 800 mil. tun CO<sub>2</sub> eq. in concrete, steel and asphalt only**

**130 mil. tun CO<sub>2</sub> eq. Annual CZE emissions**



## Destroyed military equipment



Tanks	96 462 t	7 913 t
Armored combat vehicles (ACV)	63 280 t	6 566 t
Artillery systems	18 746 t	2 074 t
Reactive systems of salvo fire (RSSF)	12 480 t	701 t
Means of anti-aircraft defense	5 616 t	286 t
Airplanes	4 361 t	8 548 t
Helicopters	1 435 t	954 t
Automotive equipment	49 800 t	1 764 t
Легких швидкісних катерів/кораблів	345 t	38 t
Large landing ships	9 300 t	19 t
Tank with fuel	1 925 t	3 054 t
Operational-tactical level drones	44 t	13 t

[Hide](#)

31 930 t <sup>i</sup>

Emissions into the atmosphere

263 794 t <sup>i</sup>

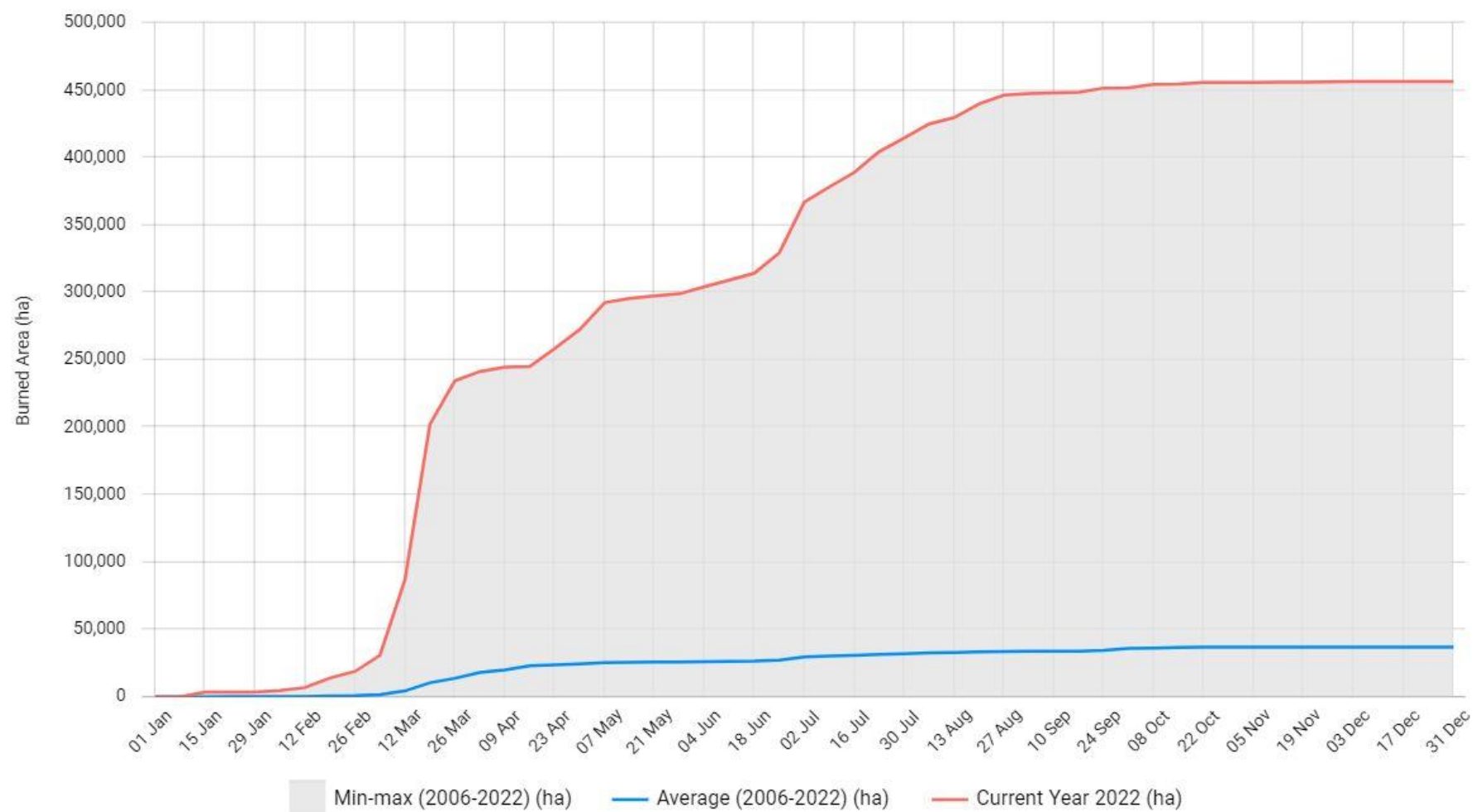
Waste

13 006 <sup>i</sup>

Units of equipment

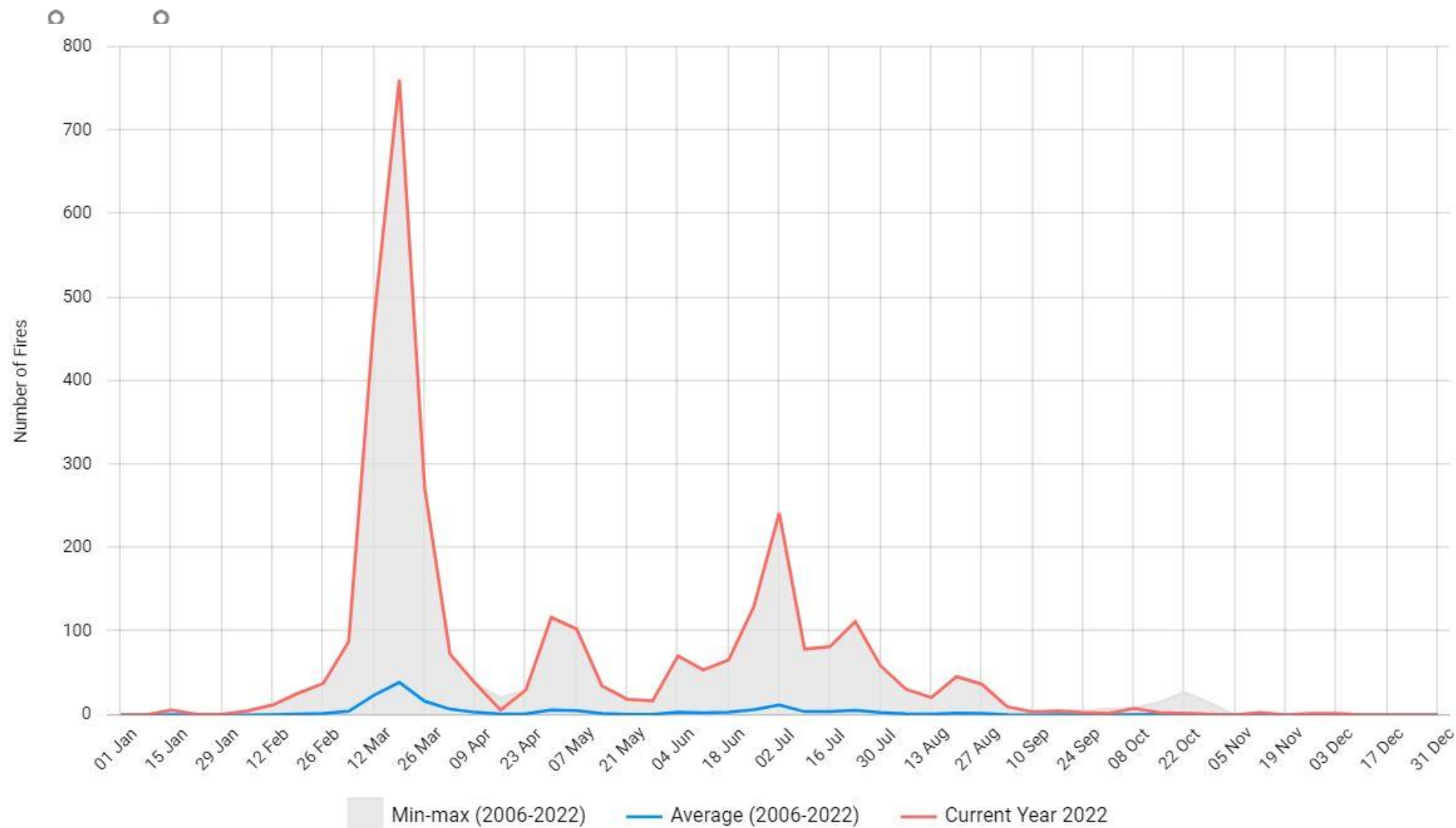
[Download the emissions calculator](#) <sup>↓</sup>





Source: Copernicus, EFFIS



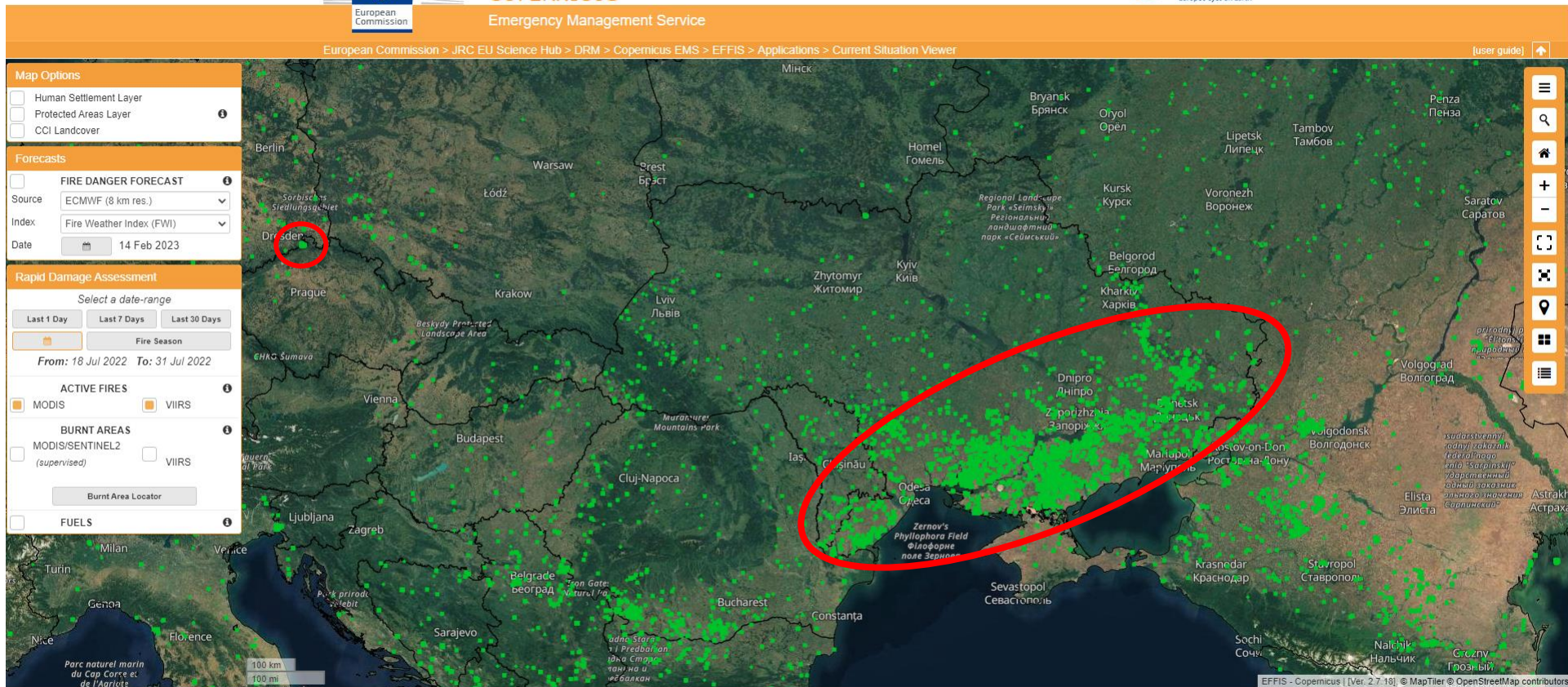


Source: Copernicus, EFFIS





COPERNICUS  
Emergency Management Service





# What other thing we do to help

New GEO 7 report will include  
environmental damage of conflicts








EPA network is network of directors of European Environmental Agencies

Starting interest group on environmental war damages in UA



A man in a light blue t-shirt and light blue trousers is pushing a black and red lawnmower across a green lawn. In the background, a multi-story apartment building has been severely damaged, with its structure exposed and windows missing. Tall, thin trees stand around the building. The scene is set during the day under a cloudy sky. A semi-transparent white box on the right side of the image contains the text "Thanks for your attention".

Thanks for  
your  
attention